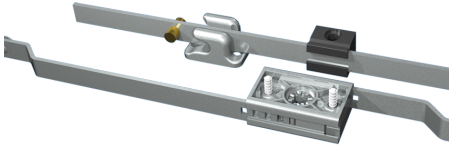


VISION OUTSIDE CLASSIC



The system is mounted outside the sealing area. When the swing handle is turned to close, the upper flat rod is moving upwards and the lower rod downwards. The rod is customized with the latching points A1/A2 and B1/B2 specified according to your application.

Latch points (frame part) and rod guides ordered separately.



MATERIAL

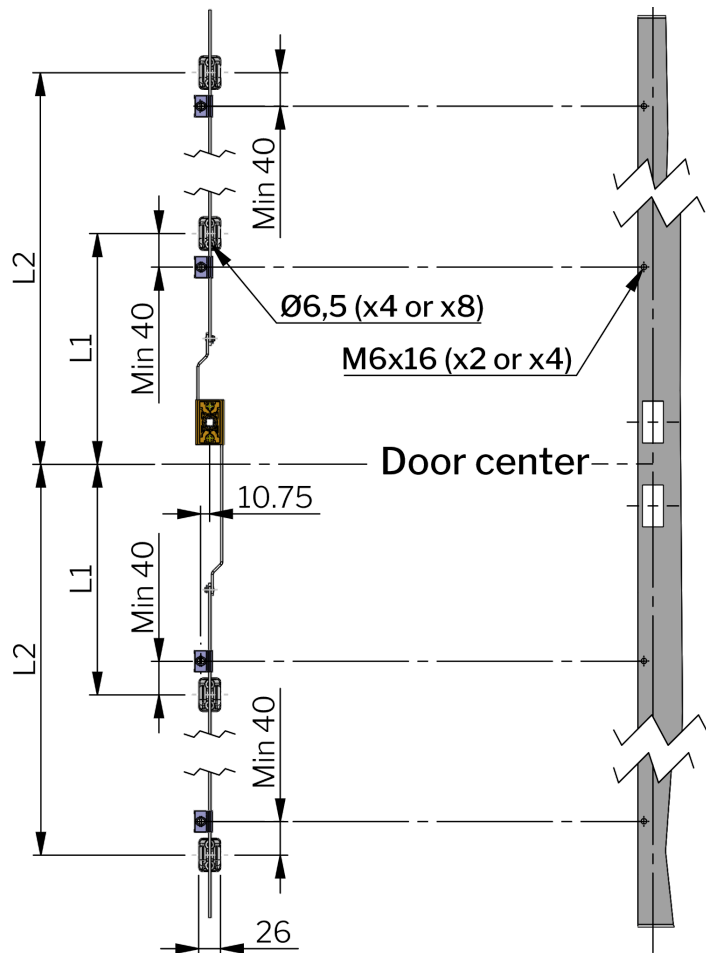
Control mechanism: Zinc die cast, zinc plated, special surface treatment (passes 30 day salt-spray test according to ISO 9227, equivalent to ASTM B 117) or glass fibre reinforced polyamide (PA6GF30)
Rod: Steel, zinc plated or stainless steel 304

RELATED PRODUCTS

Handles: 1-002.02, 1-005.10, 1-006.50, 1-002.01, 6-010, 1-002.03, 1-006.01, 1-006.03, 1-007, 1-002.08

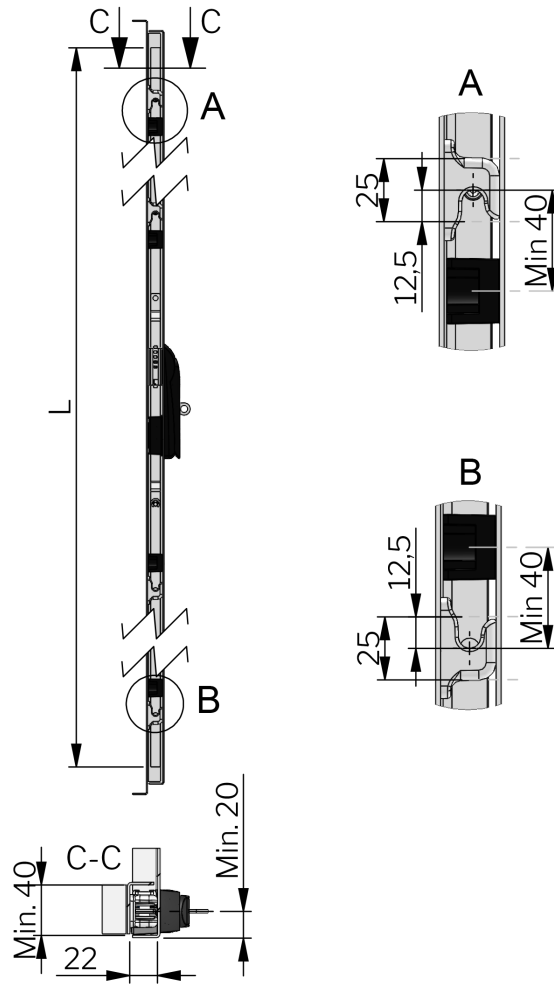
Needed components for a complete system:

1-008.57, 1-008.25
 Use the Index Code at industrilas.com

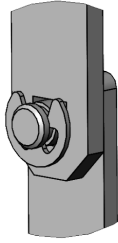


Make your selections in each column to create your article number (AAAA-BBBB-CCCC)

AAAA	Material rod	Material control mechanism	BBBB	Rod system	CCCC	L in mm	L1 in mm	L2 in mm
1321	Steel, zinc plated	Zinc, zinc plated	2000	Vision Outside Classic E-clip	0900	700	300	-
1390	SS 316	Zinc, Delta seal	3000	Vision Outside Classic Quick Fit	1200	1500	400	-
1350	Steel, zinc plated	PA6GF30			982	982	300	700
1395	SS 316	PA6GF30			1700	1700	300	800



E-clip



Quick-fit

